

CITY LIVING



214/180 Campbell Parade Bondi Beach NSW

2  2  1 

The acclaimed 'Pacific' is the setting for this single level apartment with 180 degree views over the beach and beyond. Delivering the ultimate beachside lifestyle, this chic apartment has an open plan layout that celebrates light, space and sea.

KEY FEATURES

The location - Cosmopolitan, convenient and stylish, the Pacific is only moments away from Speedo's Fitness Centre, a supermarket, boutique shopping and a plethora of delicious eateries.

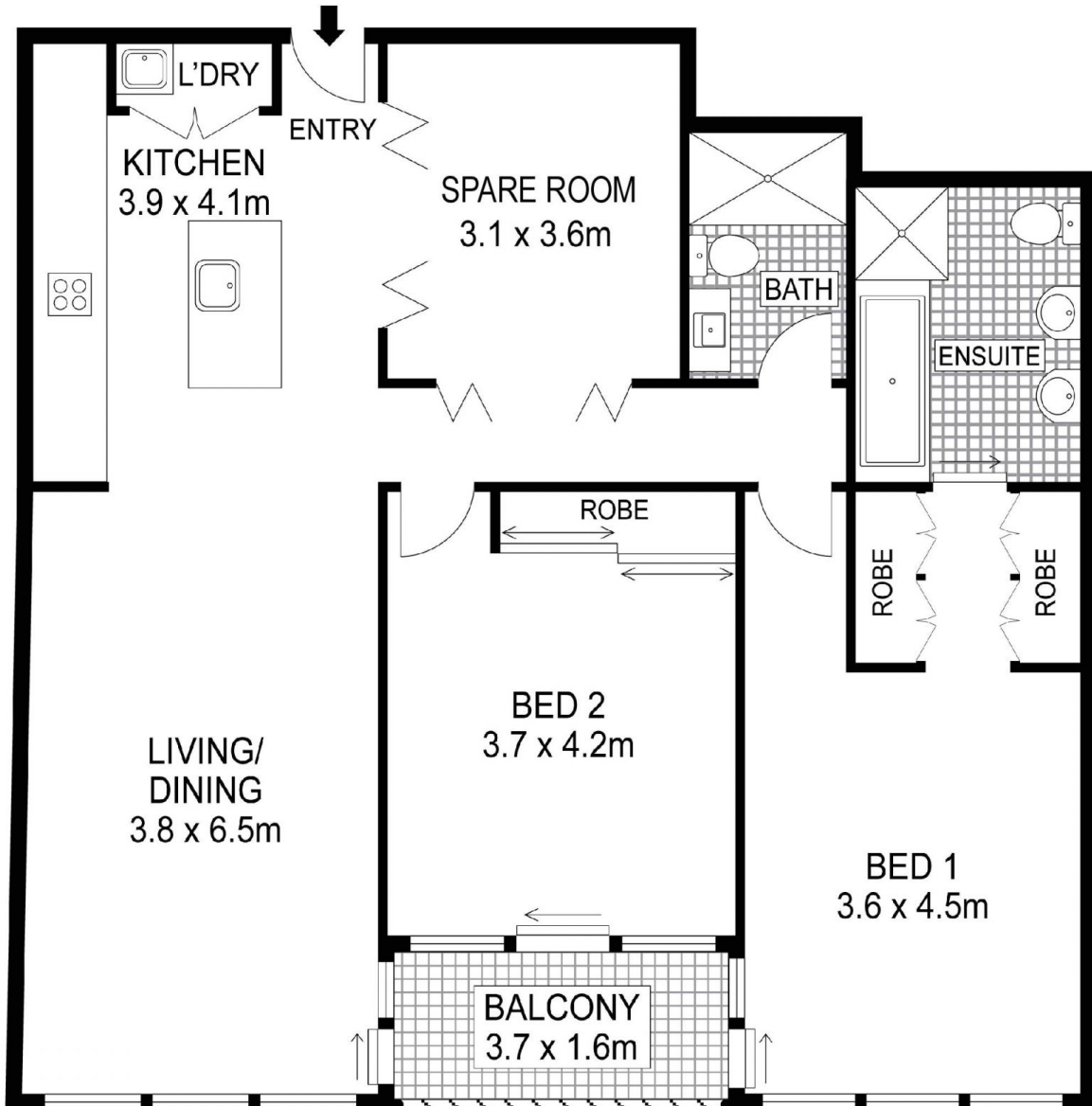
The layout - Filled with natural light, along with a streamlined layout, the balcony has breathtaking views and is accessible from both bedrooms and the living area.

Price : \$ 3,300,000
Building Size : 120 sqm
Land Size : 136 sqm
View : <https://www.cityliving.com.au/sale/nsw/eastern-suburbs/bondi-beach/residential/apartment/7223448>

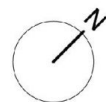
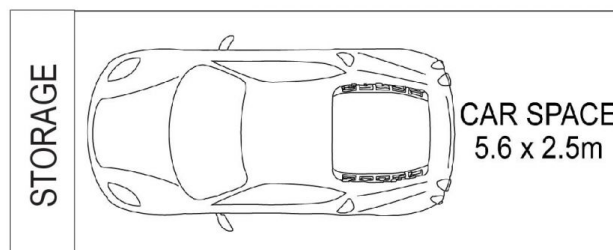


Tasman Fallshaw
02 8248 9104

<https://www.cityliving.com.au>



LEVEL TWO



Plans shown are for presentation purposes only and are not part of any legal document or title. They are subject to errors, omissions, inaccuracies and should not be used as a sole and accurate reference. Interested parties should make their own inquiries using independent sources.

214/180 Campbell Parade, Bondi Beach