

CITY LIVING



515/19 Hickson Road Walsh Bay NSW

2 🛏 2 🚿 1 🚗

Transformed by a complete contemporary renovation with no expense spared, this impeccable luxury apartment overdelivers in terms of space, high end finishes and breath-taking water views in a world class harbourside setting.

Building Size : 132 sqm
View : <https://www.cityliving.com.au/sale/nsw/sydney-city/walsh-bay/residential/apartment/7422378>

KEY FEATURES

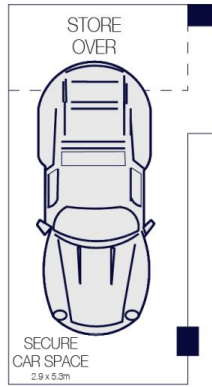
The layout - An expertly designed floorplan reveals striking open plan living/dining zones as well as a gourmet chef's kitchen with premium integrated Gaggenau appliances and two luxury bathrooms including the master ensuite, while interiors enjoy an effortless transition to the outdoors.

The terrace - A superb sun bathed entertainment terrace runs the length of the apartment with both bedrooms enjoying access while capturing breath-taking views over

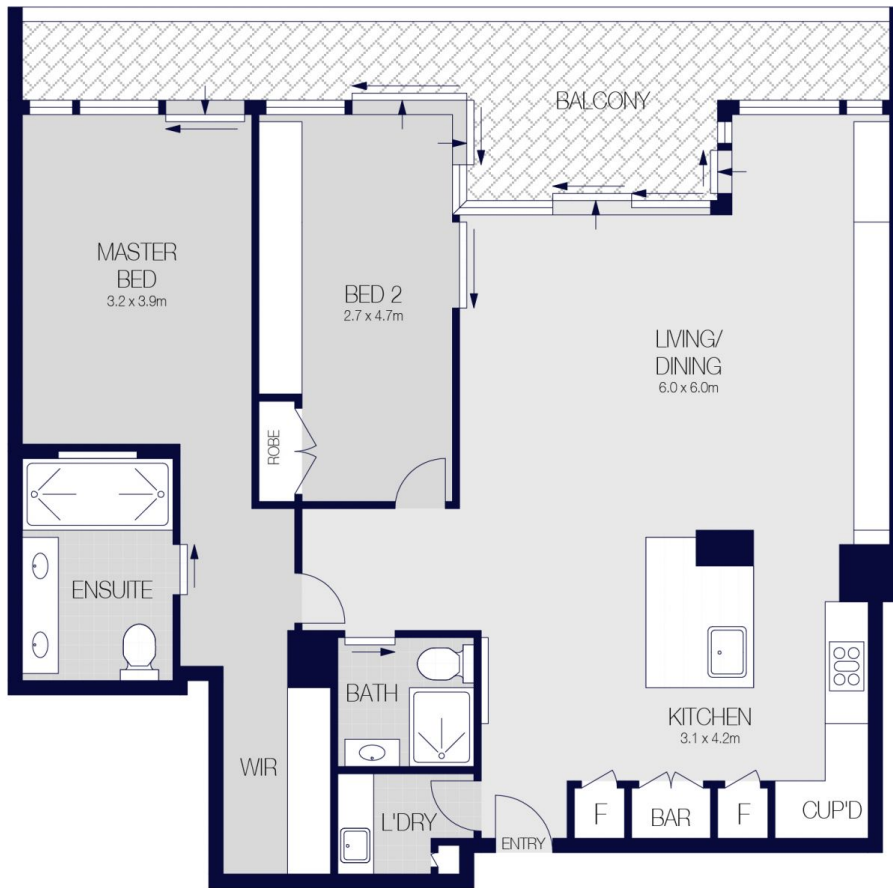


Tasman Fallshaw
02 8248 9104

<https://www.cityliving.com.au>

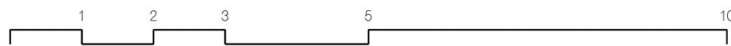
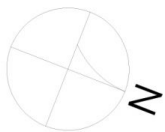


BASEMENT



LEVEL FIVE

515/19 HICKSON ROAD DAWES POINT



Scale in metres. Indicative only. Dimensions are approximate.
 All information contained herein is gathered from sources we believe to be reliable.
 However we cannot guarantee it's accuracy and interested persons should rely on their own enquiries.