

CITY LIVING



1 Pottinger Street Walsh Bay NSW

2 🛏 2 🚿 1 🚗

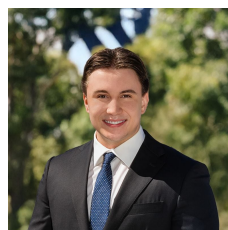
This modern apartment is situated right on the edge of Sydney Harbour at 1 Pottinger Street, offering ample living space set across two floors. Its convenient location on the fringe of the CBD makes it an ideal choice for those seeking easy access to the city.

Type : Unit
Building Size : 152 sqm
View : <https://www.cityliving.com.au/lease/nsw/sydney-city/walsh-bay/residential/unit/7425750>

KEY FEATURES

The Apartment - This lovely apartment features two comfortable bedrooms and two bathrooms, the master bedroom includes an ensuite bathroom with a bathtub. The unit also boasts an internal laundry, ample storage throughout, and a large open-plan kitchen equipped with gas cooking facilities. The living area includes both a lounge and dining space, and opens up to the balcony.

[For full version visit the website](https://www.cityliving.com.au)



Lewis Thompson
0419 267 888

<https://www.cityliving.com.au>