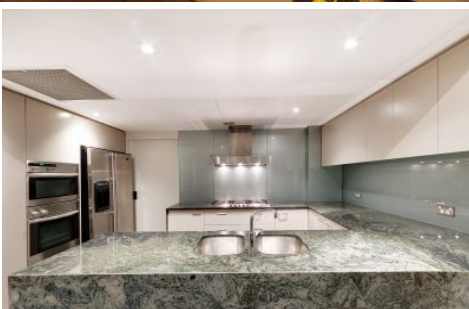


CITY LIVING



19 Hickson Road Walsh Bay NSW

3 3 2

Welcome to one of the Penthouses in Mirvac's renowned 'Pier 6/7' development. Sitting directly over the sparkling lapping waters of the Harbour, on one of the very few residential piers in Sydney, this penthouse offers very private and exclusive City Living.

Spaciously set across two levels, it has over 300SQM of private living space including three large bedrooms, separate study/office space, two and a half bathrooms with ensuite, generous indoor/outdoor living and entertaining areas as well as two secure parking spaces.

Level one boasts an enormous outdoor terrace, overlooking the harbour through to Balmain wharf and Goat Island. The living area is separate from the dining and

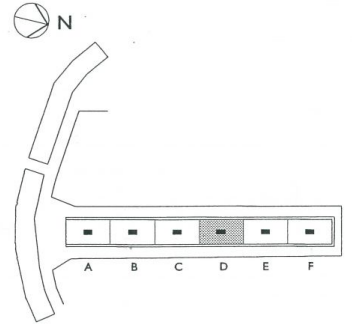
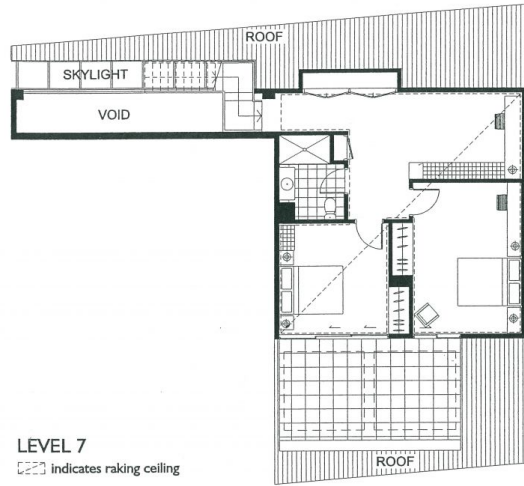
[For full version visit the website](https://www.cityliving.com.au)

Type : Apartment
Land Size : 304 sqm
View : <https://www.cityliving.com.au/lease/nsw/sydney-city/walsh-bay/residential/apartment/7429695>

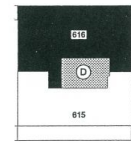
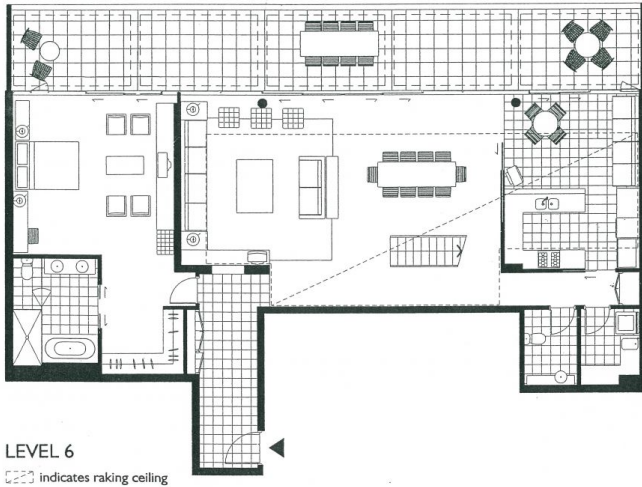


Anthony Kannis
02 8248 9109

<https://www.cityliving.com.au>



Site Plan



Lobby D

THE PIER Apartments

- 3 BEDROOM**
 Apartment 616 Level 6/7
 Living 5.3 x 5.4m
 Dining 4.8 x 4.5m
 Family 4.3 x 3.0m
 Study 5.4 x 2.7m
 Bedroom 1 5.1 x 5.0m
 Bedroom 2 3.4 x 4.7m
 Bedroom 3 3.4 x 3.5m

NOTE: Room sizes of some bedrooms are taken to back of robe.