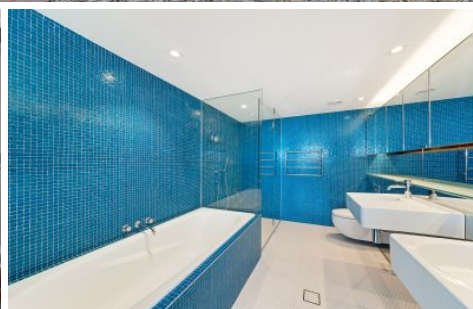


CITY LIVING



180 Campbell Parade Bondi Beach NSW

2 2 1

This furnished executive apartment is part of the Pacific Bondi Beach development, that delivers a stunning view over Bondi Beach and beyond to the horizon. With its first-class, contemporary design and prime location on Campbell Parade this apartment offers residents the quintessential beach lifestyle.

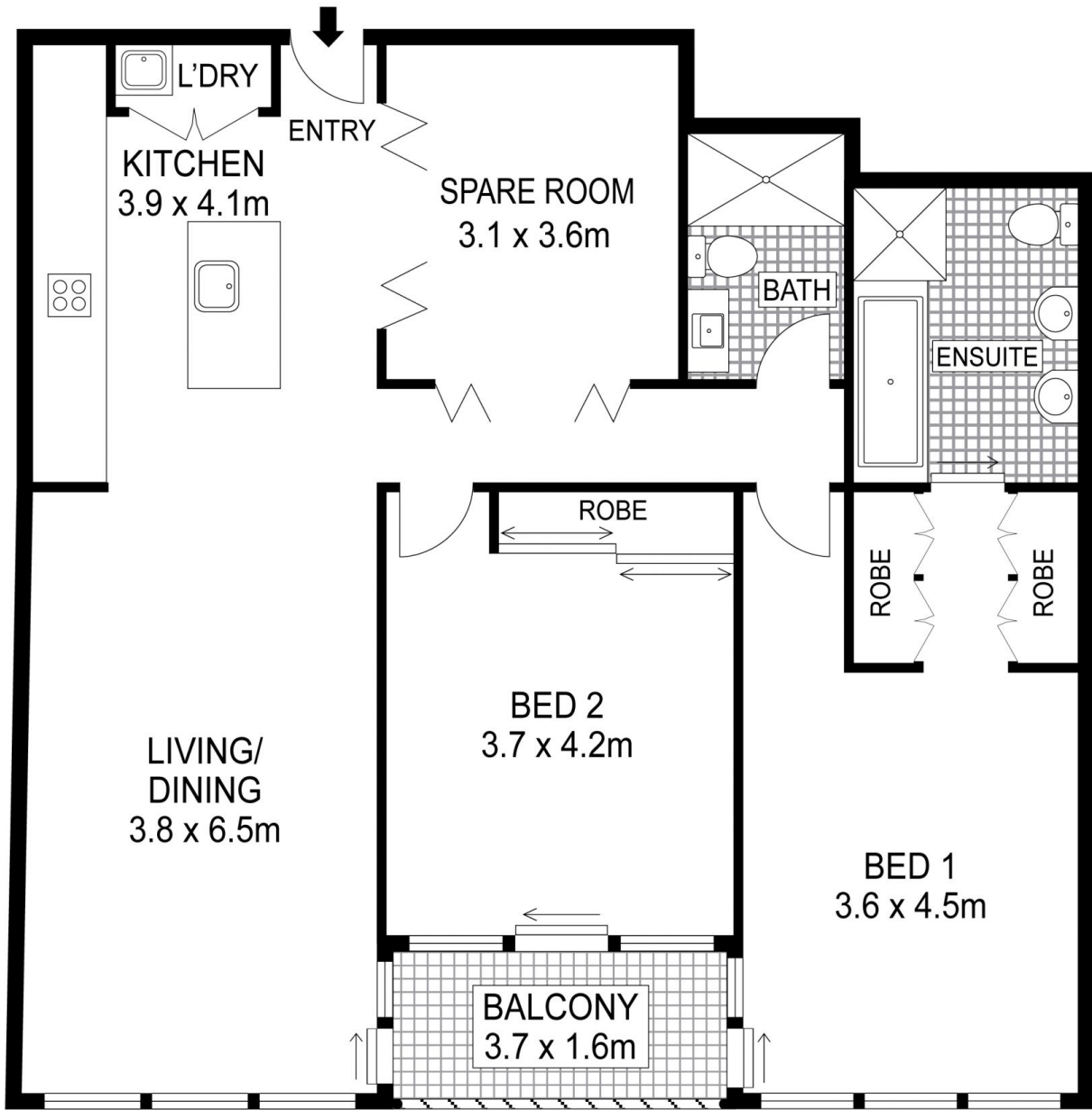
View : <https://www.cityliving.com.au/lease/nsw/eastern-suburbs/bondi-beach/residential/apartment/7534547>

KEY FEATURES

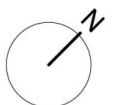
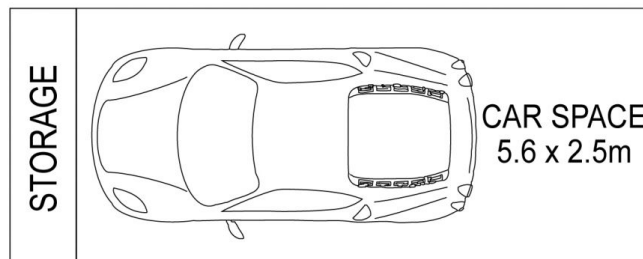
The Apartment - Two bedroom apartment, both rooms with built in wardrobes, two bathrooms, master room with ensuite and bathtub. Timber flooring throughout, access to the balcony from every room, east facing apartment with incredible sunrise views, open plan kitchen with island bench top and gas cooking, additional study room large enough to be a bedroom. Internal laundry & secure underground parking space.



Ryan Steele
02 8248 9101



LEVEL TWO



Plans shown are for presentation purposes only and are not part of any legal document or title. They are subject to errors, omissions, inaccuracies and should not be used as a sole and accurate reference. Interested parties should make their own inquiries using independent sources.

214/180 Campbell Parade, Bondi Beach