

# CITY LIVING



26 Pottinger Street Sydney NSW

3 🛏 3 🚿 2 🚗

Immerse yourself in the epitome of urban luxury with this exquisite architectural terrace, flawlessly designed to offer a truly exceptional city residence in an iconic harborside location. This stunning family home boasts state-of-the-art finishes, ensuring a perfect blend of style and sophistication. Step inside and experience the grandeur of soaring ceilings that create an airy and spacious ambiance, allowing an abundance of natural light to gracefully illuminate every corner of this magnificent property. The thoughtful design ensures a seamless flow between the living spaces, enhancing the overall sense of openness and comfort.

## KEY FEATURES

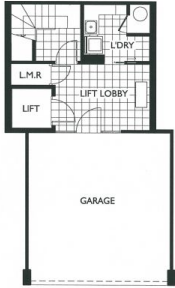
The Property - Introducing a remarkable four-story, three-bedroom terrace home that epitomizes luxurious

**View** : <https://www.cityliving.com.au/lease/nsw/sydney-city/sydney/residential/townhouse/7579635>

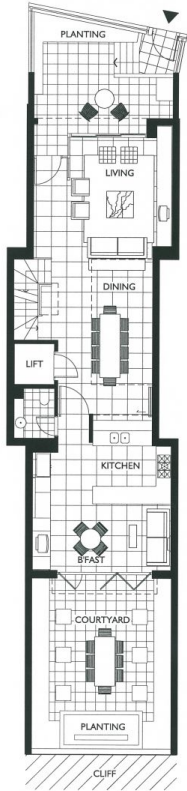


**Ryan Steele**  
02 8248 9101

<https://www.cityliving.com.au>



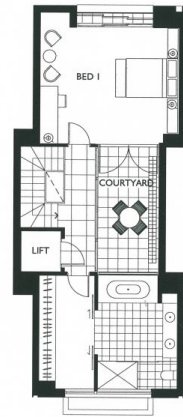
Basement Level



Ground Level



Level 1



Level 2



Note: Any ceiling bulkheads are not indicated on the plan. North point is indicative only.  
 Please note that this brochure was prepared prior to completion of construction. The information contained herein is believed to be correct but is not guaranteed. Dimensions are approximate. Changes will undoubtedly be made during development, and dimensions, areas, fittings, finishes, and specifications are subject to change without notice. The pictures of apartment interiors are illustrative impressions only. The furniture and loose fittings are not included with any sale. Prospective purchasers must rely on their own enquiries. This brochure is a guide only and does not constitute an offer of contract.



26  
POTTINGER  
STREET