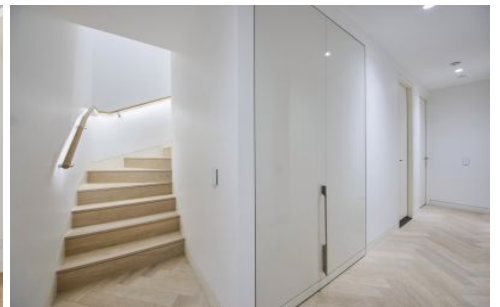


# CITY LIVING



## 84 Gloucester Street Sydney NSW

2  3 

Presenting industry-leading design crafted to perfection, this terrace home is a luxurious city haven of exceptional quality and style. Part of the highly anticipated Harrington Collection, it offers two entrances, including a striking façade along Gloucester Street.

**Price** : \$2,780,000  
**Building Size** : 127 sqm  
**View** : <https://www.cityliving.com.au/sale/nsw/sydney-city/sydney/residential/terrace/7708868>

### KEY FEATURES

The layout - Private entry via Gloucester Street welcomes you into a voluminous open living zone with sizeable lounge and dining settings and a state-of-the-art kitchen. Bedrooms are equally generous in scale and set peacefully away from the main activity of the home.

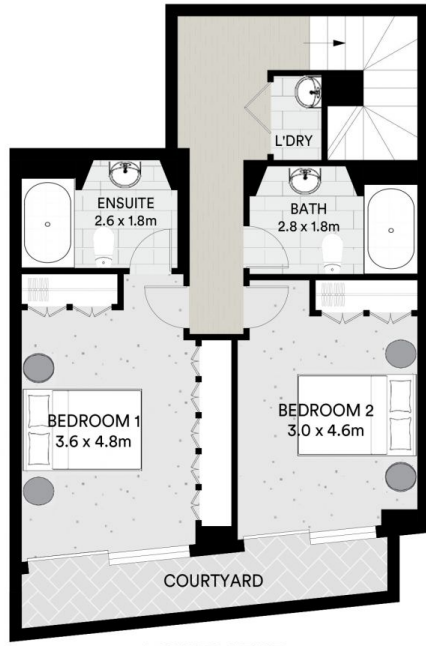
The facilities - The Harrington Collection blends contemporary living with premium retail and commercial space, focused on Harrington Street. Enhancing the



**Tasman Fallshaw**  
02 8248 9104



**Anthony Kannis**  
02 8248 9109



LOWER LEVEL



ENTRY LEVEL



Scale in metres. Indicative only. All information contained herein is obtained from sources we believe to be accurate. We cannot guarantee it's accuracy. You should make and rely on your own enquiries.