

CITY LIVING



2106/187 Liverpool Street Sydney NSW

2 2 1

Set against a magnificent city and harbour backdrop incorporating Hyde Park, St Mary's Cathedral and The Opera House, this oversized north facing apartment occupies a prized setting on the 21st floor of the highly acclaimed 'Connaught' building.

Building Size : 106 sqm
View : <https://www.cityliving.com.au/sale/nsw/sydney-city/sydney/residential/apartment/7734636>

KEY FEATURES

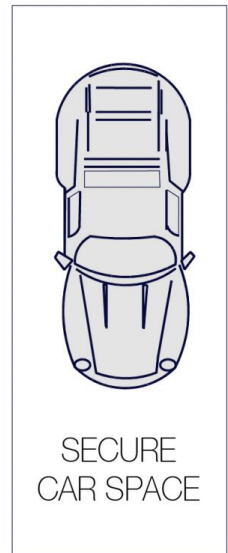
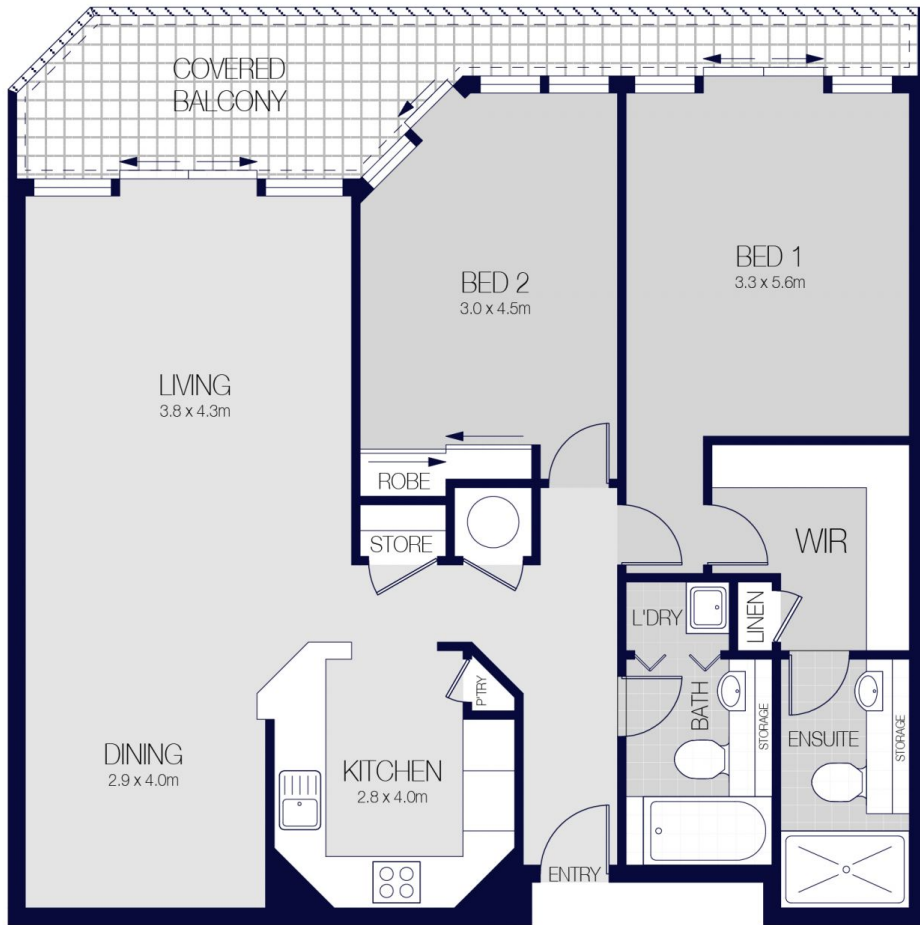
The layout - Impressive in scale and flooded with natural light, it features a cleverly designed layout with open plan living and dining areas and a huge entertainers' kitchen. Accommodation comprises two well-scaled bedrooms, the main features a walk-in wardrobe and an ensuite and the second bedroom is appointed with a built-in wardrobe.

The balcony - The sun soaked view-swept balcony is ideal for entertaining and runs the entire length of the apartment



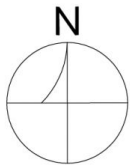
Tasman Fallshaw
02 8248 9104

<https://www.cityliving.com.au>

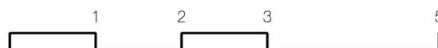


BASEMENT

LEVEL TWENTY ONE



2106/187 LIVERPOOL STREET, SYDNEY



Scale in metres. Indicative only. Dimensions are approximate.

All information contained herein is gathered from sources we believe to be reliable.

However we cannot guarantee it's accuracy and interested persons should rely on their own enquiries.