




CITY LIVING



412/50 Murray Street Pyrmont NSW

3  2  2 

With views over the city and Darling Harbour, and a layout designed to maximise the stunning setting, this three-bedroom apartment offers the ultimate in urban living. Wake up to city and walk to the CBD. The prestigious 'Darling One' location includes five-star facilities including pool, spa and sauna.

KEY FEATURES

The layout - The generous open plan living/dining spaces and stunning gourmet kitchen boast panoramic windows and open onto a covered balcony with spectacular views. Each generous bedroom has built-ins and balcony access, the main featuring a deluxe ensuite with tub.

The facilities - Designed to ensure maximum comfort and convenience, there is ducted air conditioning throughout, a

Building Size : 156 sqm
View : <https://www.cityliving.com.au/sale/nsw/sydney-city/pyrmont/residential/apartment/7734637>

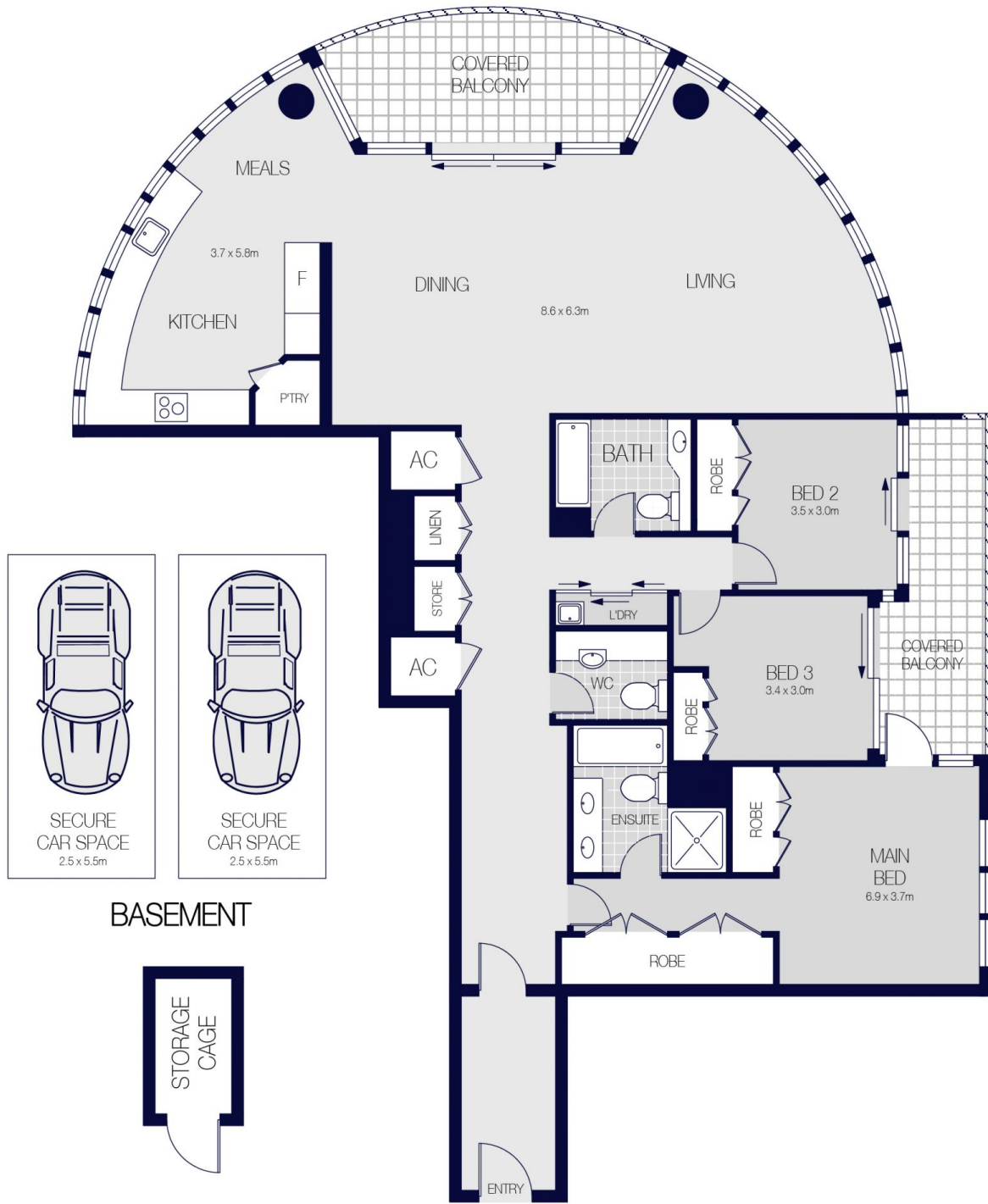


Tasman Fallshaw
02 8248 9104



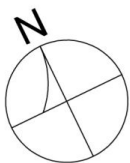
Anthony Kannis
02 8248 9109

<https://www.cityliving.com.au>



BASEMENT

LEVEL FOUR



412/50 MURRAY STREET, SYDNEY



Scale in metres. Indicative only. Dimensions are approximate.

All information contained herein is gathered from sources we believe to be reliable.

However we cannot guarantee it's accuracy and interested persons should rely on their own enquiries.