

# CITY LIVING



**310/50 Murray Street Pyrmont NSW**

2 2 1

This immaculate, well-appointed apartment in the sought-after 'One Darling Harbour' building combines comfort with unbeatable convenience and flair. It sits a short stroll to world-class city dining and entertainment venues, waterfront parks, and all the wonders that Sydney city life has to offer.

**Price** : \$ 1,330,000  
**Building Size** : 94 sqm  
**View** : <https://www.cityliving.com.au/sale/nsw/sydney-city/pyrmont/residential/apartment/7767174>

## KEY FEATURES

The layout - This private haven is laid out to maximise light and minimise intrusion. Two double bedrooms and the open-plan living/dining area flow out onto a generous balcony, while the beautifully finished kitchen and bathrooms make everyday living a true pleasure.

The facilities - The apartment comes with a designated car space in the basement garage and enjoys level lift access.

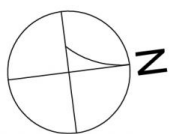
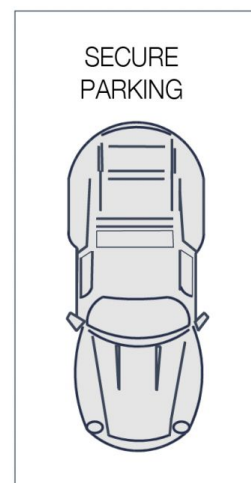
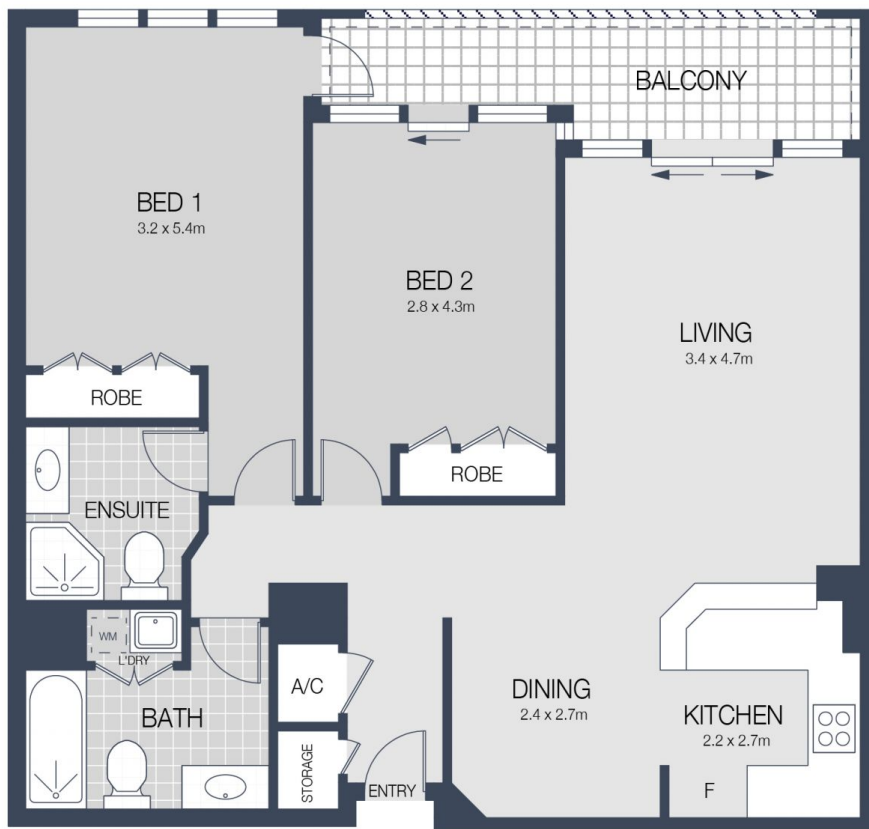


**Tasman Fallshaw**  
02 8248 9104

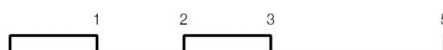


**Anthony Kannis**  
02 8248 9109

<https://www.cityliving.com.au>



310/50 MURRAY STREET, SYDNEY



Scale in metres. Indicative only. Dimensions are approximate.

All information contained herein is gathered from sources we believe to be reliable.

However we cannot guarantee it's accuracy and interested persons should rely on their own enquiries.