

CITY LIVING



1606/50 Murray Street Pyrmont NSW

2  2  1 

Boasting spectacular views extending to the Blue Mountains, this is a rare offering on the top residential floor of One Darling Harbour, only one level below the five-star swimming pool and facilities. Premium dining awaits in Darling Harbour and Barangaroo.

Price : \$ 1,575,000
Building Size : 91 sqm
View : <https://www.cityliving.com.au/sale/nsw/sydney-city/pyrmont/residential/apartment/7778388>

KEY FEATURES

The layout - Clever orientation ensures living space and both bedrooms receive the full impact of the view, as well as access to a balcony. Deluxe appointments include a granite kitchen, built-in robes, ducted air conditioning and commercial glazing to maximise outlooks over those glorious sunsets.

The facilities - The building's five-star facilities include 24/7 concierge, swipe security access and hospitality-grade

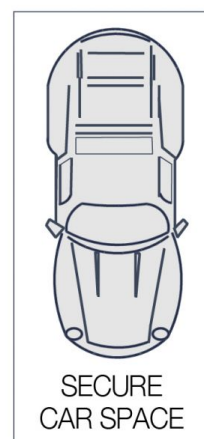
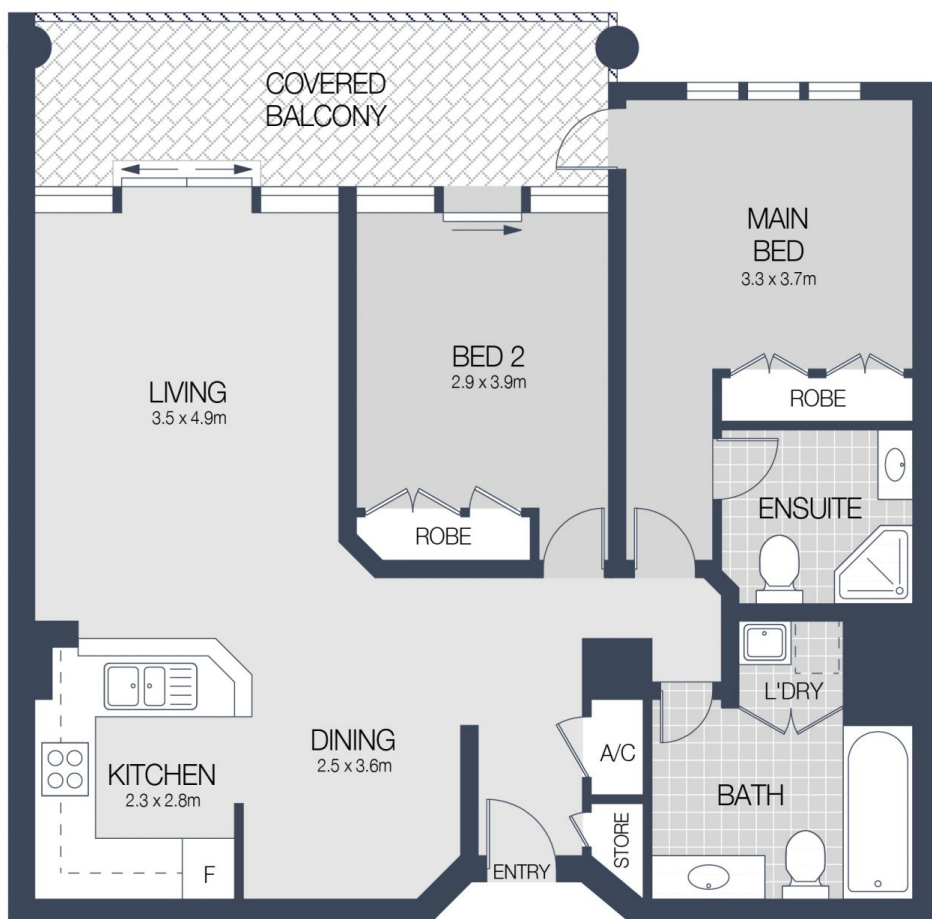


Tasman Fallshaw
02 8248 9104



Anthony Kannis
02 8248 9109

<https://www.cityliving.com.au>



LEVEL SIXTEEN



1606/50 MURRAY STREET, SYDNEY



Scale in metres. Indicative only. Dimensions are approximate.

All information contained herein is gathered from sources we believe to be reliable.

However we cannot guarantee it's accuracy and interested persons should rely on their own enquiries.