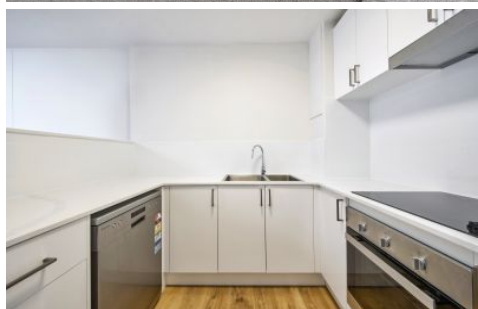


# CITY LIVING



**160 Goulburn Street Surry Hills NSW**

2 1 1

City Living introduces you to this stunning and renovated inner city apartment within the Belvedere complex, walking distance to the CBD & Hyde park.

**View** : <https://www.cityliving.com.au/lease/nsw/eastern-suburbs/surry-hills/residential/apartment/7871688>

## KEY FEATURES

The Apartment - This two-bedroom apartment includes a master bedroom with built-in wardrobes. The layout features an open-plan kitchen, a spacious dining area, and a large lounge-room. The apartment provides balcony access and comes with a secure basement parking space. Additionally, it includes an internal laundry for added convenience.

The Building - 160 Goulburn Street known as "The Belvedere" is a secure building with security swipe access, intercom service, lift access to apartment and underground



**Ryan Steele**  
02 8248 9101