

# CITY LIVING



## 26 Pottinger Street Sydney NSW

3 3 2

Immerse yourself in the epitome of urban luxury with this exquisite architectural terrace, flawlessly designed to offer a truly exceptional city residence in an iconic harborside location. This stunning family home boasts state-of-the-art finishes, ensuring a perfect blend of style and sophistication. Step inside and experience the grandeur of soaring ceilings that create an airy and spacious ambiance, allowing an abundance of natural light to gracefully illuminate every corner of this magnificent property.

### KEY FEATURES

The Property - Introducing a remarkable four-story, three-bedroom terrace home that epitomizes luxurious living. The top floor offers a master suite with a private terrace and ensuite. The second level features two spacious bedrooms, bathroom and a beautiful overlook.

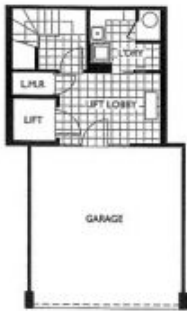
**Price** : \$3,250 pw

**View** : <https://www.cityliving.com.au/lease/nsw/sydney-city/sydney/residential/townhouse/7893389>

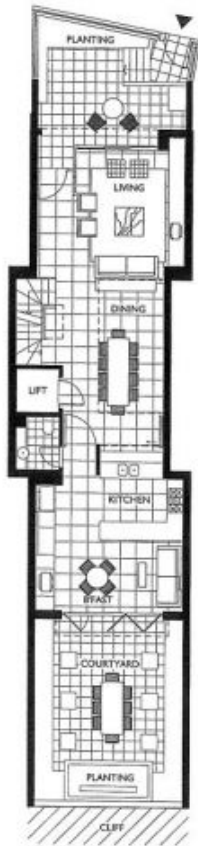


**Ryan Steele**  
02 8248 9101

<https://www.cityliving.com.au>



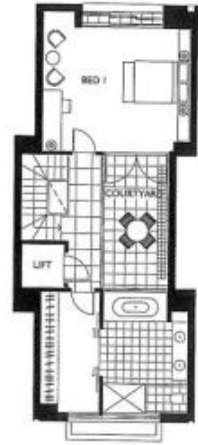
Basement Level




Ground Level



Level 1



Level 2

  
 Note: Any ceiling bulkheads are not indicated on the plan. North point is indicative only.  
 Please note that this brochure was prepared prior to completion of construction. The information contained herein is believed to be correct but is not guaranteed. Dimensions are approximate. Changes and modifications to the plan during development, and alterations, areas, fittings, fixtures, and specifications are subject to change without notice. The presence of apartment interiors are indicated by dashed lines only. The furniture and home fittings are not included with any unit. Prospective purchasers must rely on their own enquiries. This brochure is a guide only and does not constitute an offer of common units.