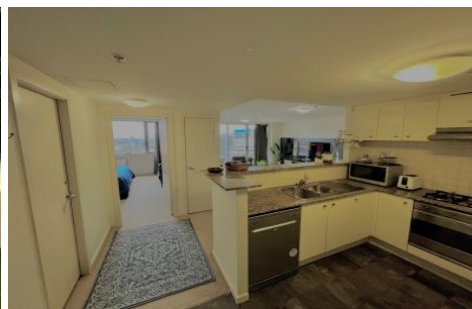
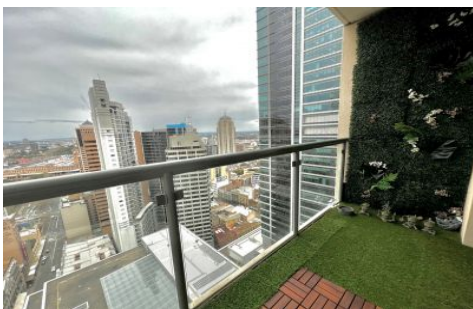


CITY LIVING



393 Pitt Street Sydney NSW

1 1 1

Offering generous proportions, this unfurnished one-bedroom apartment comes with a study, boasting a southern aspect that extends towards Botany Bay. Situated in the highly sought-after Hordern Towers within world Square.

Land Size : 72 sqm
View : <https://www.cityliving.com.au/lease/nsw/sydney-city/sydney/residential/apartment/7907539>

KEY FEATURES

The Apartment - This spacious unfurnished one-bedroom apartment features built-in wardrobes and a convenient study nook. The generous lounge area opens up to a balcony with expansive views. The open-plan kitchen is equipped with gas cooking and includes a dishwasher for added convenience. Other amenities include one bathroom, internal laundry and an underground parking space.



Ryan Steele
02 8248 9101