

CITY LIVING



2402/187 Liverpool Street Sydney NSW

2 2 1

Postcard views and refined finishes combine to offer a distinct version of elegance in this premier apartment, synonymous with inner-city prestige. Overlooking the natural beauty of Hyde Park and the harbour, the iconic building offers first-class facilities.

KEY FEATURES

The views - One for the entertainer, the layout presents substantial living space facing north, assuring the majesty of the outlook over Hyde Park, St Mary's Cathedral and The Opera House sails is present throughout the day. Both bedrooms offer a balcony with a view of the park.

The facilities - It occupies the north-west corner of Level

[For full version visit the website](https://www.cityliving.com.au)

Type : Apartment
Building Size : 101 sqm
View : <https://www.cityliving.com.au/sale/nsw/sydney-city/sydney/residential/apartment/7930808>

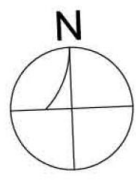
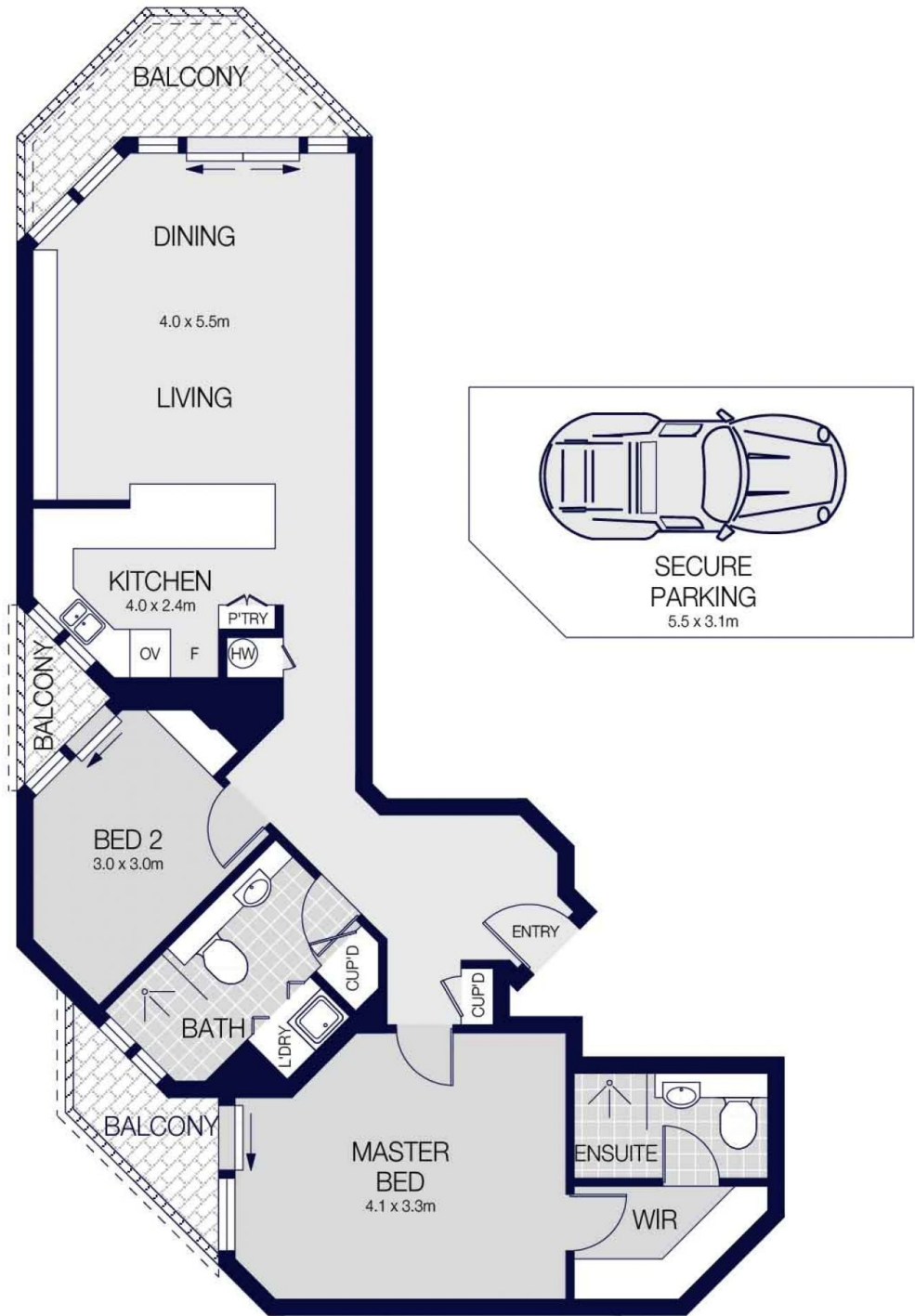


Tasman Fallshaw
02 8248 9104

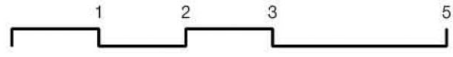


Anthony Kannis
02 8248 9109

<https://www.cityliving.com.au>



2402/187 LIVERPOOL STREET, SYDNEY



Scale in metres. Indicative only. Dimensions are approximate.
 All information contained herein is gathered from sources we believe to be reliable.
 However we cannot guarantee it's accuracy and interested persons should rely on their own enquiries.