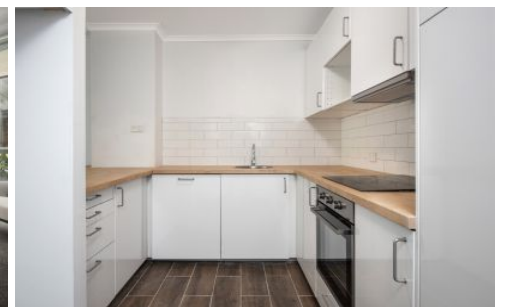


CITY LIVING



25 Market Street Sydney NSW

1 1

Located on Market Street in the central city, this one-bedroom apartment is within walking distance of Barangaroo, Chinatown, Darling Harbour, Kings Street Wharf and George Street.

View : <https://www.cityliving.com.au/lease/nsw/sydney-city/sydney/residential/apartment/7938393>

KEY FEATURES

The apartment - One Bedroom with ensuite & bathtub, open plan kitchen with dishwasher and gas cooking, combined living and dining space which flows through to the balcony providing a view of Pyrmont bridge

The Building - The Berkeley is a very well known building in the CBD with on site concierge/building manager and a secure entrance with swipe access and lifts to your apartment.



Ryan Steele
02 8248 9101