

CITY LIVING



1505/50 Murray Street Pyrmont NSW

2 2 1

Offering executive-style accommodation with access to five-star facilities, this fantastic apartment in One Darling Harbour features spectacular views extending to the Blue Mountains. Walk to premier dining precincts in Pyrmont Village, Darling Harbour and Barangaroo.

Price : \$ 1,550,000
Building Size : 94 sqm
Land Size : 94 sqm
View : <https://www.cityliving.com.au/sale/nsw/sydney-city/pyrmont/residential/apartment/7946887>

KEY FEATURES

The Layout - Clever orientation ensures living space and both bedrooms receive the full impact of the view, as well as access to a balcony. Quality appointments include a granite kitchen, built-ins, ducted air conditioning and commercial glazing to maximise outlooks that sweep across the ANZAC Bridge into the distance.

The Facilities - The building's five-star facilities, include 24/7 concierge, swipe security access and hospitality-grade

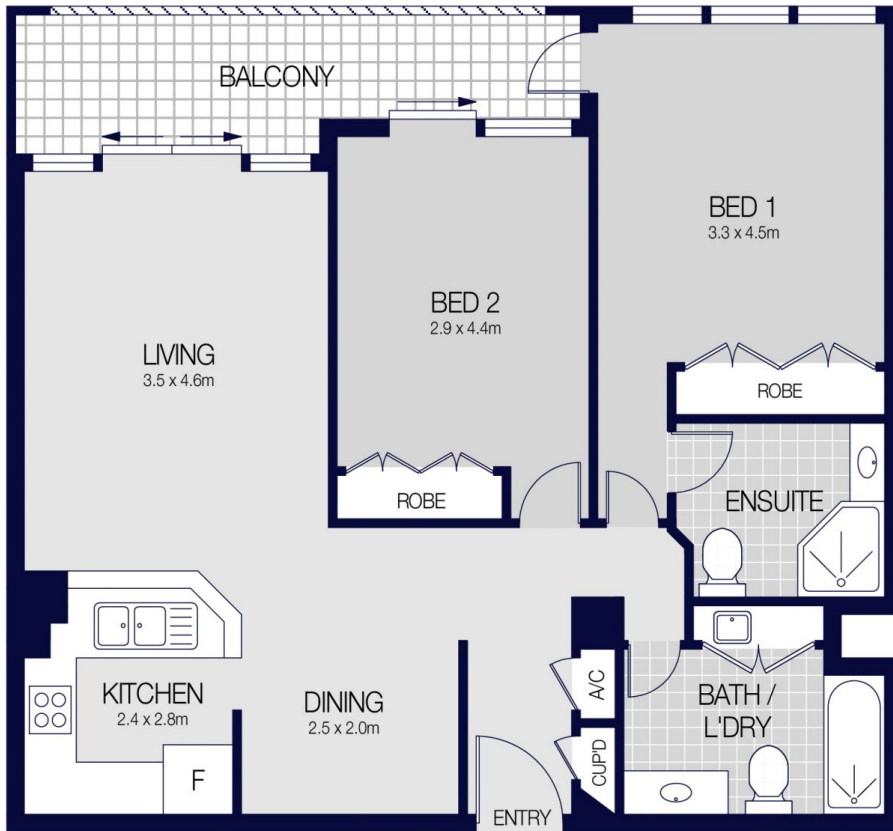
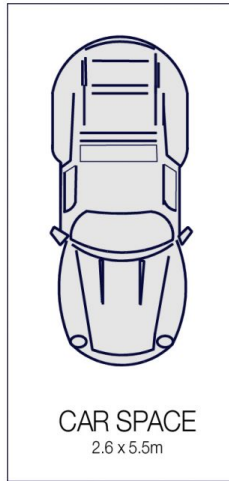


Tasman Fallshaw
02 8248 9104

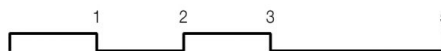


Anthony Kannis
02 8248 9109

<https://www.cityliving.com.au>



1505/50 MURRAY STREET, PYRMONT



Scale in metres. Indicative only. Dimensions are approximate.
All information contained herein is gathered from sources we believe to be reliable.
However we cannot guarantee it's accuracy and interested persons should rely on their own enquiries.