

# CITY LIVING



**2502/187 Liverpool Street Sydney NSW**

2  2  1 

Set on the 25th floor and dominated by a magnificent north facing panorama over Hyde Park to the city skyline, The Opera House and Sydney Harbour stretching all the way to The Heads, this exceptional apartment delivers the ultimate city lifestyle in the iconic The Connaught.

**Price** : \$ 2,225,000  
**Building Size** : 101 sqm  
**View** : <https://www.cityliving.com.au/sale/nsw/sydney-city/sydney/residential/apartment/8002358>

## KEY FEATURES

The layout - Impressive in scale and flooded with northern light, it features open plan living and dining areas flowing to a north facing sun soaked view-swept balcony. There is neat kitchen, while the well-sized bedrooms enjoy access to private balconies and the main features a walk-in wardrobe and an ensuite.

The facilities - Residents enjoy access to a newly renovated rooftop swimming pool and spa, sun deck and a

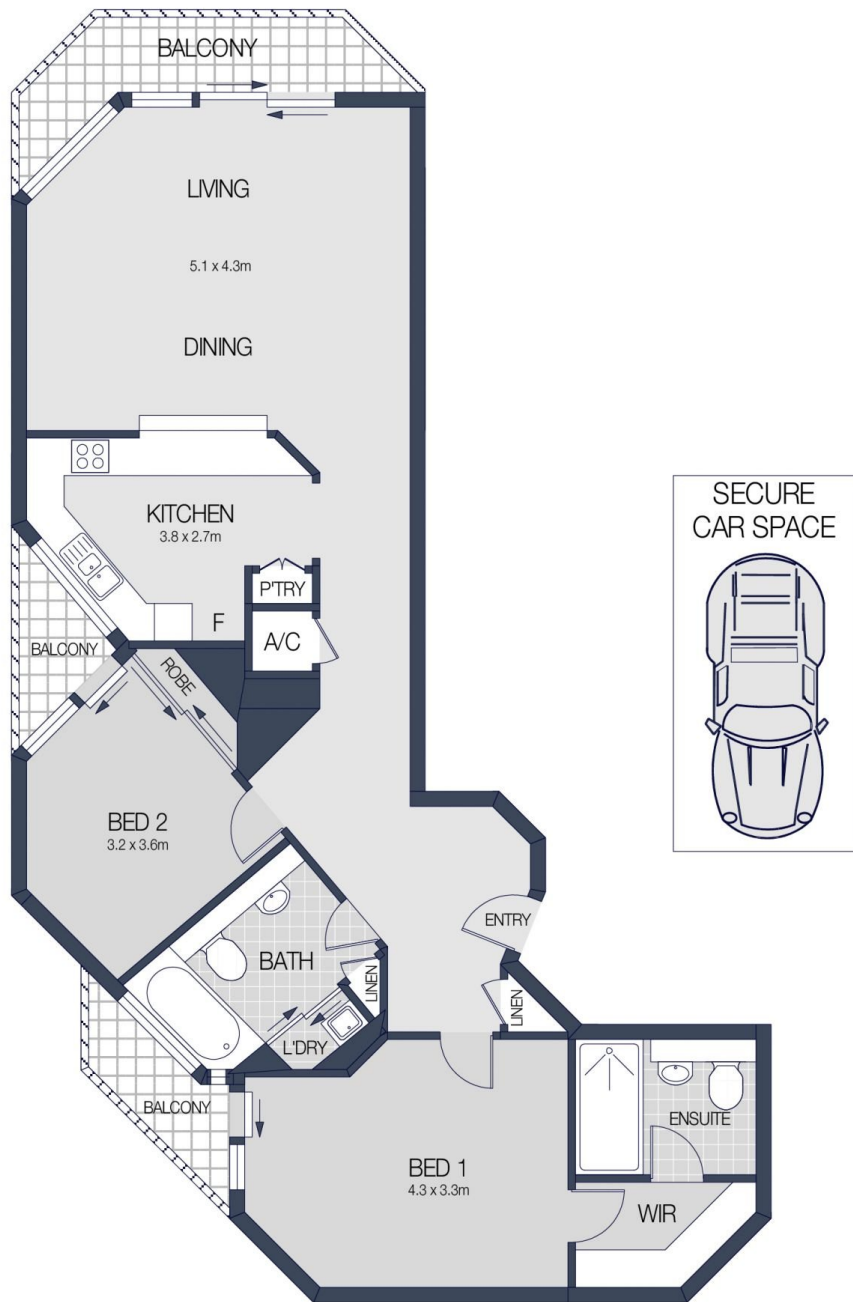


**Tasman Fallshaw**  
02 8248 9104

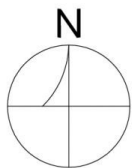


**Anthony Kannis**  
02 8248 9109

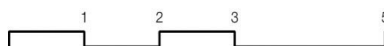
<https://www.cityliving.com.au>



LEVEL TWENTY FIVE



2502/187 LIVERPOOL STREET, SYDNEY



Scale in metres. Indicative only. Dimensions are approximate.  
 All information contained herein is gathered from sources we believe to be reliable.  
 However we cannot guarantee it's accuracy and interested persons should rely on their own enquiries.