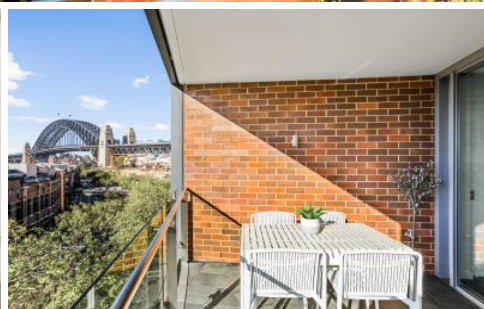
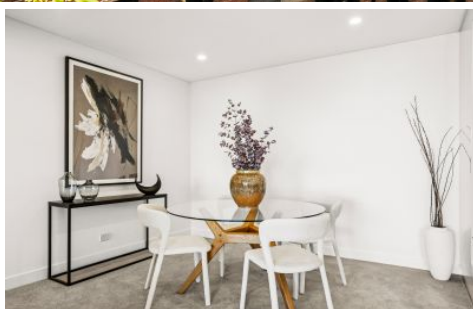


CITY LIVING



601/1 Pottinger Street Walsh Bay NSW

2 🛏 2 🚗 1 🚗

Capturing sweeping vistas across the Harbour, Bridge and city skyline, this stunning apartment presents the ultimate executive retreat in a prestigious address. Commanding a prized north-west corner position, it offers a front row seat to Sydney's iconic scenery.

KEY FEATURES

The Layout - Designed with a refined contemporary edge, the apartment features open plan living and dining flowing seamlessly to an entertainers' balcony, complemented by a sleek modern kitchen. Two generous bedrooms each enjoy private balconies, while two stylish bathrooms and secure parking complete the offering.

Type : Apartment
Building Size : 121 sqm
View : <https://www.cityliving.com.au/sale/nsw/sydney-city/walsh-bay/residential/apartment/8133179>



Tasman Fallshaw
02 8248 9104



Anthony Kannis
02 8248 9109

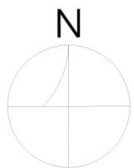
[For full version visit the website](https://www.cityliving.com.au)

<https://www.cityliving.com.au>



LEVEL SIX

601/1 POTTINGER STREET, MILLERS POINT



Scale in metres. Indicative only. Dimensions are approximate.

All information contained herein is gathered from sources we believe to be reliable.

However we cannot guarantee it's accuracy and interested persons should rely on their own enquiries.