

CITY LIVING



135/365 Kent Street Sydney NSW

2 2 1

Presenting an expansive open-plan living and dining area drenched in morning sun, this centrally located apartment provides a well-equipped pad in the heart of Sydney's business district. Stroll to bustling dining destinations and King Street Wharf, while Wynyard Station is only moments away.

KEY FEATURES

The Layout - The hallway leads to a vibrant open-plan living and dining setting with a balcony, maximising prime north-east corner positioning. The kitchen is well-appointed with leading appliances, and both bedrooms are oversized with the master including an ensuite.

[For full version visit the website](https://www.cityliving.com.au)

Type : Apartment
Price : \$ 1,150,000
Building Size : 90 sqm
View : <https://www.cityliving.com.au/sale/nsw/sydney-city/sydney/residential/apartment/8359213>

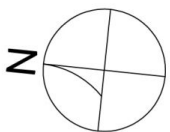
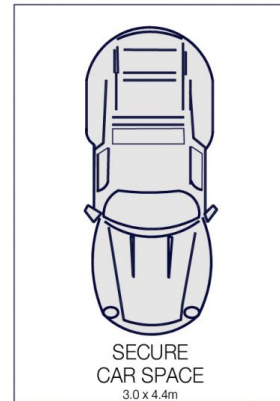
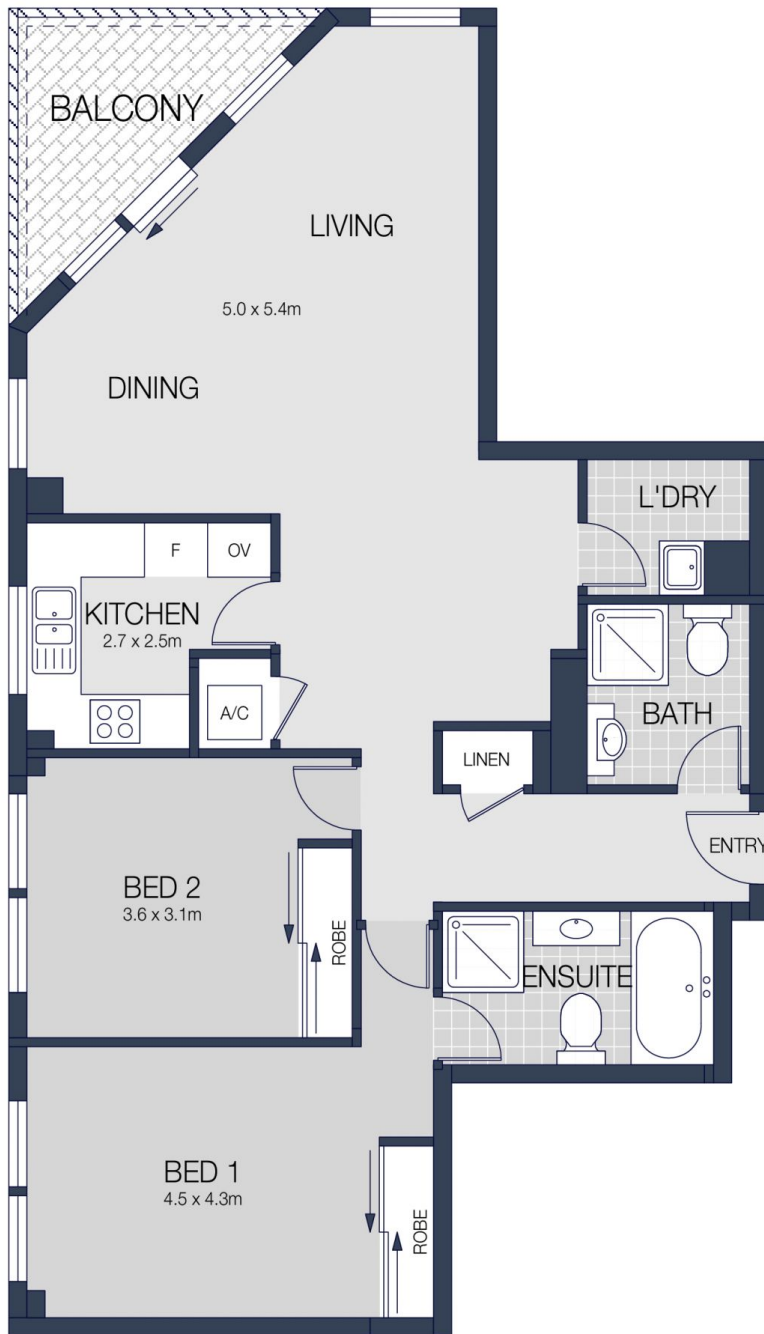


Tasman Fallshaw
02 8248 9104

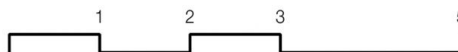


Anthony Kannis
02 8248 9109

<https://www.cityliving.com.au>



135/365 KENT STREET, SYDNEY



Scale in metres. Indicative only. Dimensions are approximate.

All information contained herein is gathered from sources we believe to be reliable.

However we cannot guarantee it's accuracy and interested persons should rely on their own enquiries.