

CITY LIVING



12/5 Towns Place Walsh Bay NSW

2  2  1 

Showcasing a sublime renovation with Manhattan-style luxury as the brief, this haven features two outdoor spaces and generous proportions in a tightly held complex. Enjoy world-class facilities while only footsteps away from the picturesque Barangaroo Reserve, Roslyn Packer Theatre and the Metro.

Type : Apartment
Price : \$ 2,800,000
Building Size : 167 sqm
View : <https://www.cityliving.com.au/sale/nsw/sydney-city/walsh-bay/residential/apartment/8359825>

KEY FEATURES

The Design - Drawing inspiration from the iconic high-rises of New York City, the design combines house-like proportions with opulent materials and lavish inclusions. Both ends flow out to outdoor spaces, ensuring entertainment credentials, alfresco dining and relaxed late-night refreshments.

[For full version visit the website](https://www.cityliving.com.au)

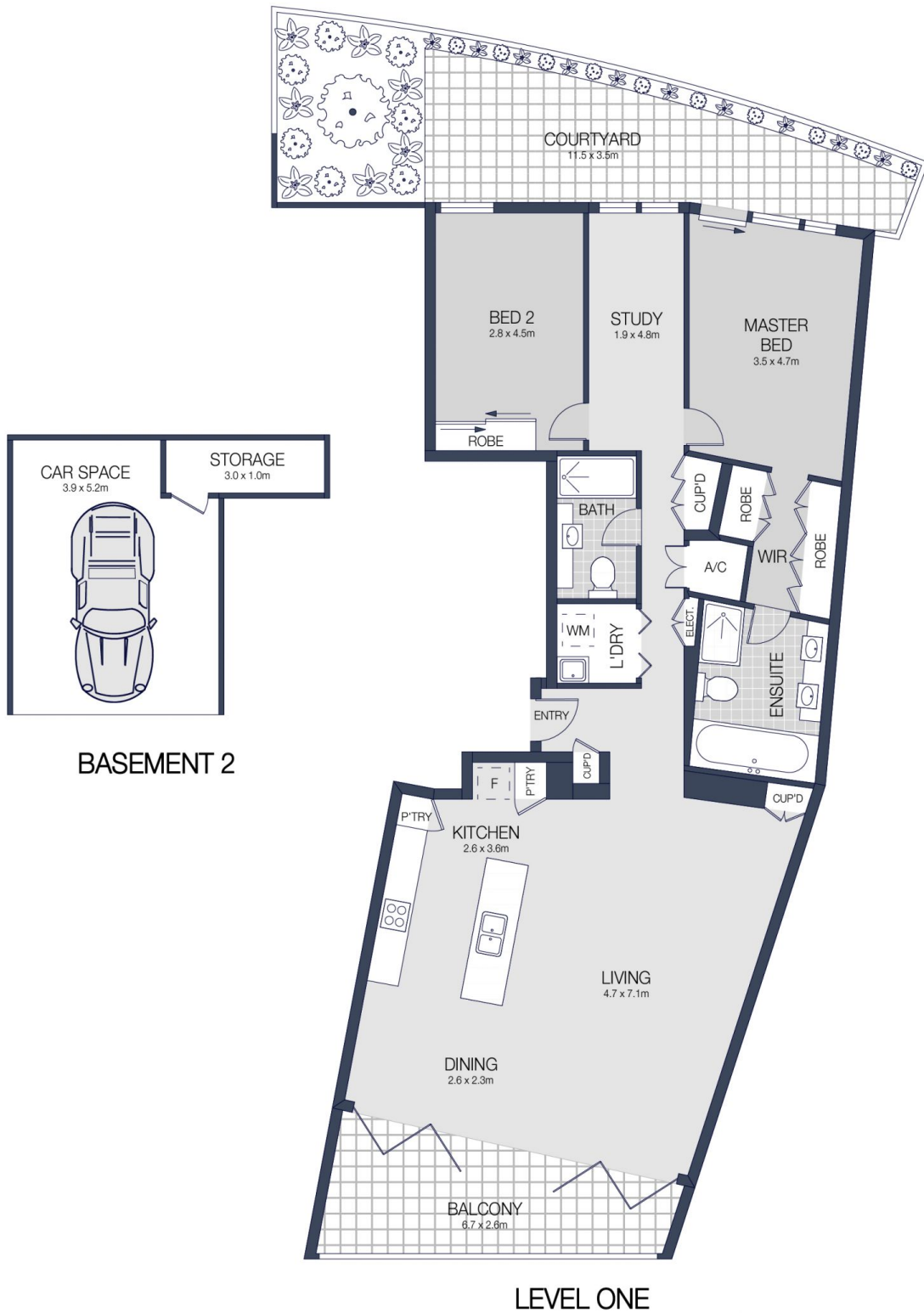


Tasman Fallshaw
02 8248 9104



Anthony Kannis
02 8248 9109

<https://www.cityliving.com.au>



12/5 TOWNS PLACE, MILLERS POINT



Scale in metres. Indicative only. Dimensions are approximate.
 All information contained herein is gathered from sources we believe to be reliable.
 However we cannot guarantee it's accuracy and interested persons should rely on their own enquiries.