

# CITY LIVING



**68/25 Market Street Sydney NSW**

1 1

Immerse yourself in the pinnacle of sophisticated city living with this meticulously renovated one-bedroom apartment, set within the prestigious Berkeley Building in the heart of Sydney's CBD. Designed with elegance and modernity in mind, this residence seamlessly blends style, comfort, and functionality, creating an inviting sanctuary above the vibrant pulse of the city.

## KEY FEATURES

The Apartment - Step inside to experience a sophisticated open-plan living and dining area, where sleek, contemporary finishes create a seamless blend of style and elegance, with split system A/C in both lounge and bedroom. The gourmet kitchen is a chef's delight, featuring

**Type** : Apartment  
**Price** : Contact Agent  
**View** : <https://www.cityliving.com.au/sale/nsw/sydney-city/sydney/residential/apartment/8602225>



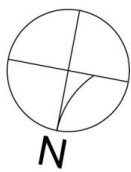
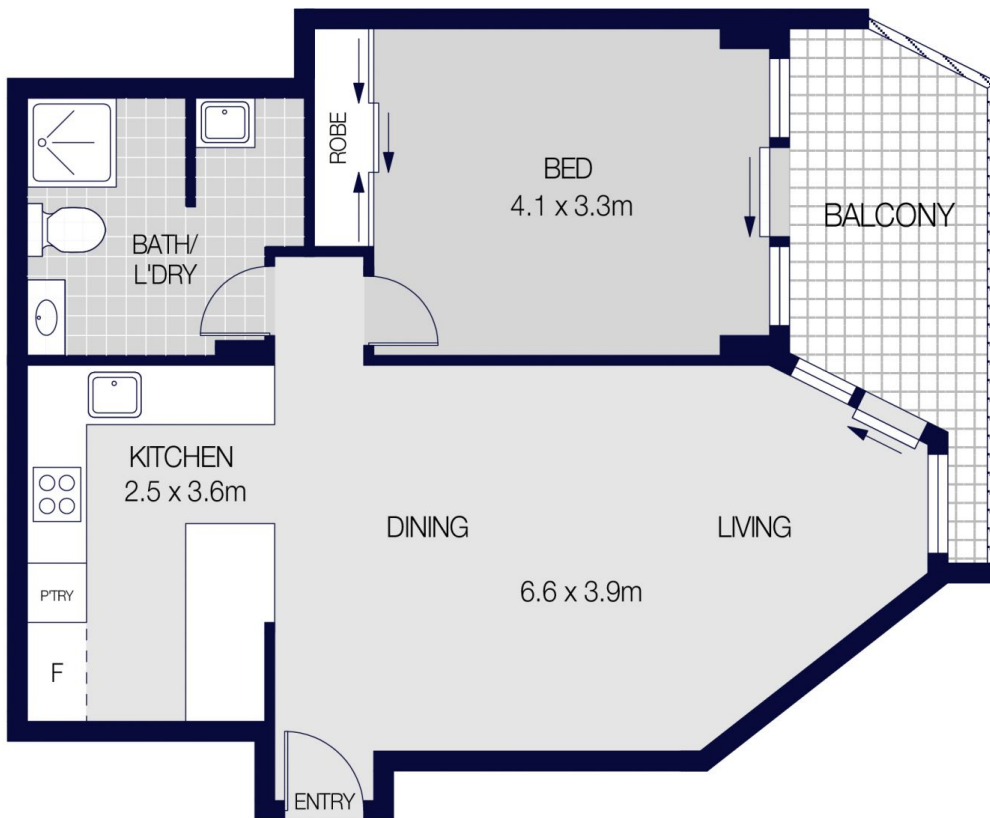
**Tasman Fallshaw**  
02 8248 9104



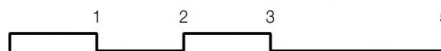
**Anthony Kannis**  
02 8248 9109

[For full version visit the website](https://www.cityliving.com.au)

<https://www.cityliving.com.au>



68/25 MARKET STREET, SYDNEY



Scale in metres. Indicative only. Dimensions are approximate.

All information contained herein is gathered from sources we believe to be reliable.

However we cannot guarantee it's accuracy and interested persons should rely on their own enquiries.