

CITY LIVING



281 Elizabeth Street Sydney NSW

3 3 2

This three-bedroom/three-ensuite apartment overlooks Sydney's famed Hyde Park, with views sweeping out to Sydney Harbour and beyond. On the 16th floor of the prestigious 'Regency Hyde Park', this apartment has an open plan living area that adjoins a sizable balcony running along the length of the apartment. Ample space to laze about in the summer sun and enjoy the leafy outlook over the park or entertain friends with these stunning views.

KEY FEATURES

The Apartment - There are three bedrooms each with their own ensuite bathrooms and walk-in robes. Quality fixtures and fittings have been implemented throughout the apartment including an internal laundry with dryer,

[For full version visit the website](https://www.cityliving.com.au/lease/nsw/sydney-city/sydney/residential/apartment/8608037)

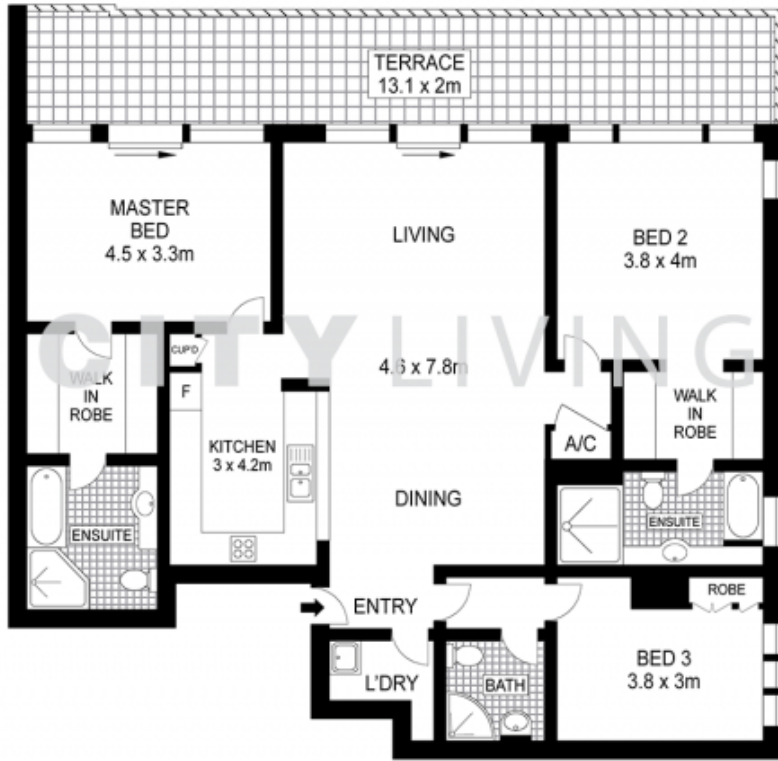
Type : Apartment
Land Size : 146 sqm
View : <https://www.cityliving.com.au/lease/nsw/sydney-city/sydney/residential/apartment/8608037>



Lewis Thompson
0419 267 888



Alex Simeonidis
02 8248 9102



0 1 2 3 4 5
 Scale in metres. Indicative only. Dimensions are approximate.

SIXTEENTH FLOOR

