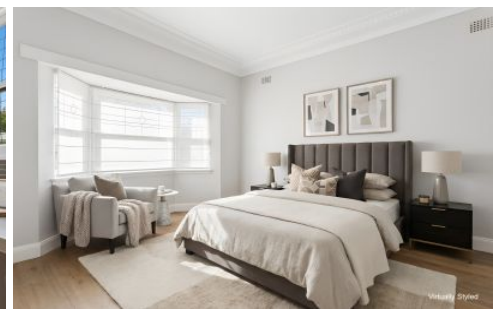


# CITY LIVING



**13 Powys Avenue Bardwell Park NSW**

3  1  3 

Enjoy classic charm and modern comfort in this beautifully presented family home, set in a peaceful residential pocket just moments from local parks, transport and easy access to the Sydney CBD. Featuring polished timber floors, a renovated kitchen and generous outdoor space, this home delivers relaxed suburban living with everyday convenience.

**Type** : House

**View** : <https://www.cityliving.com.au/lease/nsw/st-george/bardwell-park/residential/house/8623606>

## KEY FEATURES

The Home - Well-maintained brick residence with bright interiors, polished timber flooring and a spacious living area with feature fireplace (Non-Operational). The updated kitchen includes quality appliances, ample storage and a practical layout. Generous bedrooms are filled with natural



**Alex Simeonidis**  
02 8248 9102

[For full version visit the website](https://www.cityliving.com.au)

<https://www.cityliving.com.au>